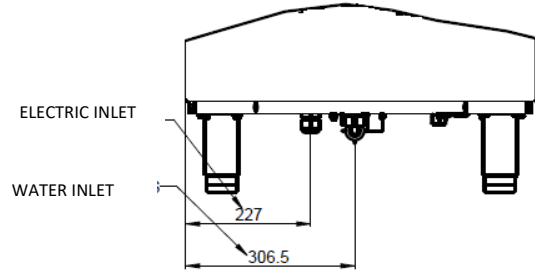
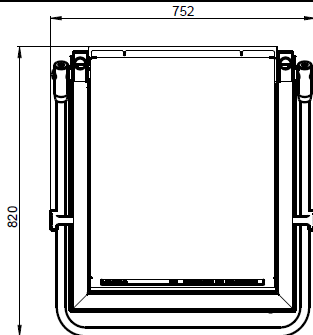
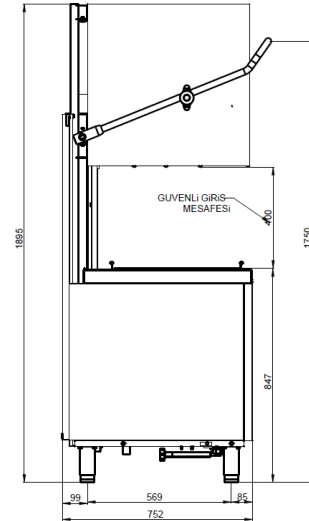
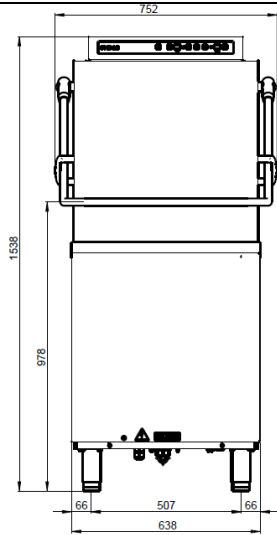


BYM102 HOOD TYPE DISHWASHER



GENERAL FEATURES

- *Controlled by electronic card
- * Digital displays indicating the temperatures of washing and rinsing water
- * Easy to dismount and mount washing / rinsing arms and filters for cleaning purposes,
- * Safety system to stop the operation of the machine when the hood is lifted ,
- * Rack dimensions 500x500 mms .
- *Safety thermostats of temperatures of tank and boiler ,
- * AISI 304 Cr-Ni S/S
- * Complete with 1 pc glass rack
- * 1 pc plate rack
- * 1 pc cutlery rack
- *If necessary, possibility of installing rinsing pump where the water pressure is not sufficient and draining pump where the drain level is high ,
- * Optional rinsing pump, dischard pump, detergent pump and draining pump.
- *The water level in the tank controlled by presostat automatically ,
- *Starting the machine through hood

Water pressure	2-4	Bar
Power inlet	380 50	V-Hz.
	220 60	
	208 60	
Washing Motor Power	0,6	kW
Max. Electric Power	8,7	kW
Frequency	50-60	Hz
Water consumption	3,3	Lt/cyc
Tank Power	2,7	kW
Boiler Power	8	kW
Washing Temperature	55	°C
Rinsing Temperature	85	°C
Water Inlet Temperature	45-55	°C
Boiler Volume	6	lts
Tank Water Volume	29	lts
Plate Capacity	1080	pcs/h
Basket Capacity	60	pcs/h
Glass Capacity	2160	pcs/h
Tray Capacity	540	pcs/h
Max. Plate Diameter	400	mm
Plate Height	380	mm
Program Number	3	pcs
Short Program	90	sec
Medium Program	120	sec
Long Program	180	sec
Cable cross section	5x4	mm ²
Weight	113	kgs
Rinsing Motor Power	0,33	kW
Draining Motor Power	31W 50Hz. / 37W 60Hz.	watts
Detergent Pump Power	8	watts
Rinse Aid Pump Power	8	watts

TECHNICAL SPECIFICATIONS

Water inlet	3/4	inches
-------------	-----	--------